

# ALUMANATION®

## 301

**The best way to protect  
your metal structures!**



RPM/Belgium N.V.

Alteco Technik GmbH

An **RPM** Company

# Alumanation® 301

The heavy duty Protective Coating for metal



***Alumanation® 301 is a heavy duty coating for the corrosion protection and water-proofing of metal structures such as roofs, side walls, storage tanks, bridges, structural steel, piping, cranes, electrical transmission towers, etc.***

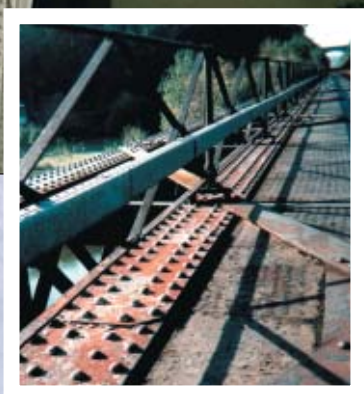
***Alumanation® 301 is a solvent based premium grade industrial maintenance coating. It is formulated from specially processed asphaltic liquids, non-drying oils, a proprietary blend of natural and synthetic fibres and premium leafing grade aluminium.***

## Advantages

- High solid coating applied at a rate of 0.8 litres/m<sup>2</sup> in one coat to a dry film thickness of 350 microns.
- Surface preparation by high pressure power wash or power brushing. No sandblasting needed.
- Outstanding ability to adhere to unprimed metal surfaces.
- Aluminium pigment in Alumanation® 301 acts as a UV-heat reflector and insulator.
- Reduces the interior temperature in metal clad buildings dramatically in hot sunny climates.
- The coating remains intact and homogeneous with no cracking even in climates where the daily and annual variations in ambient temperature are very large.
- Only one layer of the coating provides waterproofing, anticorrosion and crack bridging performance.
- Alumanation® 301 has a complete range of compatible accessories. These accessories extend the range of industrial maintenance.
- Can be applied by heavy duty airless spray equipment or brush.
- Good chemical resistance to both acids and alkalis.
- 45 minutes after application, Alumanation® 301 can withstand rain conditions.



Alumanation® 301 has been used worldwide in all kinds of environmental and climatic conditions to protect metal from corrosion and water infiltration!



Alumanation® 301 has series of independent approvals and certificates from various authorities across the world stretching back more than 20 years.

These approvals and certificates have given the product credibility for insurance backed guarantees that are available with Alumanation® 301. Some of these approvals include:

- Bureau VERITAS approval
- Test Certificate from Staatliches Materialprüfungsamt Nordrhein - Westfalen, Germany
- Test Certificate from EMPA, Switzerland
- Passing, ASTM B117, 1000 hours salt spray testing

PROTECTIVE  QUALITY®

Physical Properties	Value	Test Method
Specific gravity:	1.06 ± 0.2	ASTM D-1475
Solids by weight:	61% ± 1%	ASTM D-1353
Solids by volume:	47% ± 1%	ASTM D-1475
Colour:	aluminium	
Drying time:	24 hours	ASTM D-1640
Min. coverage metal:	0.8 l/m <sup>2</sup>	
Dry film thickness with 0,8 l/m <sup>2</sup> :	min. 350 microns	
Artificial weathering - Xenontest 2000 hours:	no evident change	DIN 53 357
Adhesion test after 1000 hours saline immersion:	0.12 N/mm <sup>2</sup>	DIN ISO 4624

For additional technical data, see the Alumanation® 301 data sheet.

## Products in the ALUMANATION® 301 System

### VULKEM® 116

A highly elastic one component polyurethane mastic to be used to ensure waterproofing at expansion joints, connections to drains, walls, ventilation pipes, etc.

### ALUMAFLASH® AND POLYFLASH®

Two highly elastic self adhesive and waterproofing butyl tapes that are used with Alumanation® 301 to repair and waterproof overlaps, joints, rustholes, gutters, connections, etc...

Alumaflash® has an aluminium foil surface (for repairs after application) and Polyflash® has a geo-textile finish (can be coated with Alumanation® 301).

*This brochure is not intended to establish product recommendations for any installation. To the best of our knowledge the information contained herein is true and accurate at the time of issue, but is subject to change without prior notice. No part of this brochure may be copied without written authorisation of RPM/Belgium N.V. - © RPM/Belgium N.V.*

#### Warranty

RPM/Belgium N.V. and Alteco Technik GmbH warrant all goods to be free from defects and will replace materials proven to be defective. The given information corresponds to our present standard of knowledge. However, it is the buyer's responsibility to determine the suitability of the products in individual cases by conducting own tests.

*RPM/Belgium N.V. and Alteco Technik GmbH are subsidiaries of RPM Inc., USA, a public owned American company and are leading manufacturers of industrial flooring systems, coatings, sealants and membranes. RPM/Belgium N.V. and Alteco Technik GmbH are certified by Lloyd's to the ISO 9001 quality standard.*



Authorised applicator:

#### RPM/Belgium N.V.

Industriepark Noord · H. Dunantstraat 11B · B-8700 Tielt  
 Tel.: + 32 (0) 51 / 40 38 01 · Fax: + 32 (0) 51 / 40 55 90  
 E-mail: rpm@rpm-belgium.be · http://www.rpm-belgium.be

#### Alteco Technik GmbH

Raiffeisenstraße 16 · D-27239 Twistringen  
 Tel.: + 49 (0) 42 43 / 92 95 0 · Fax: + 49 (0) 42 43 / 33 22  
 E-mail: info@alteco-technik.de · http://www.alteco-technik.de

